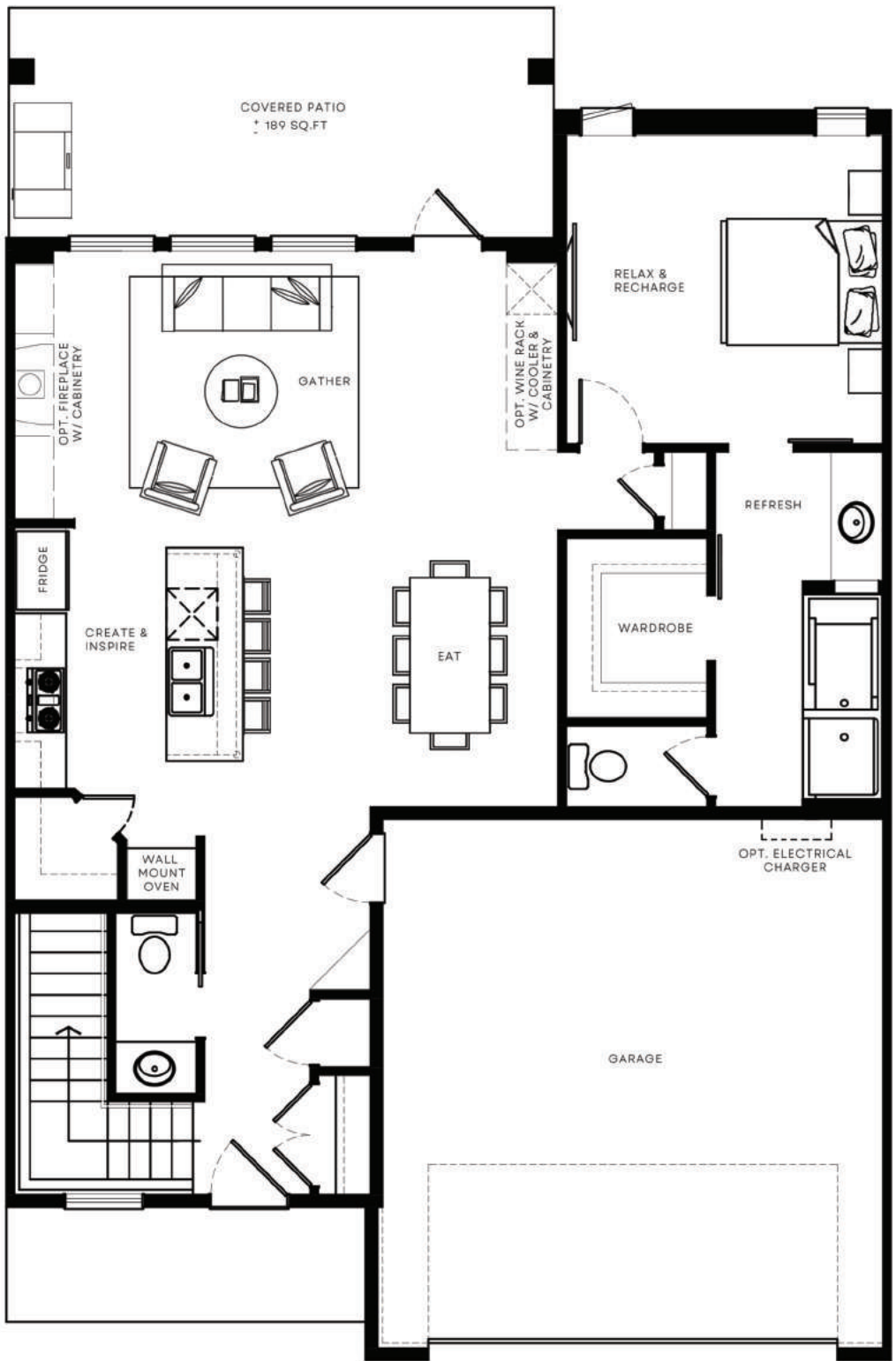


Champagne
BUNGALOWS

THE MOET II

MAIN
±1,071 SQ.FT
9' CEILINGS



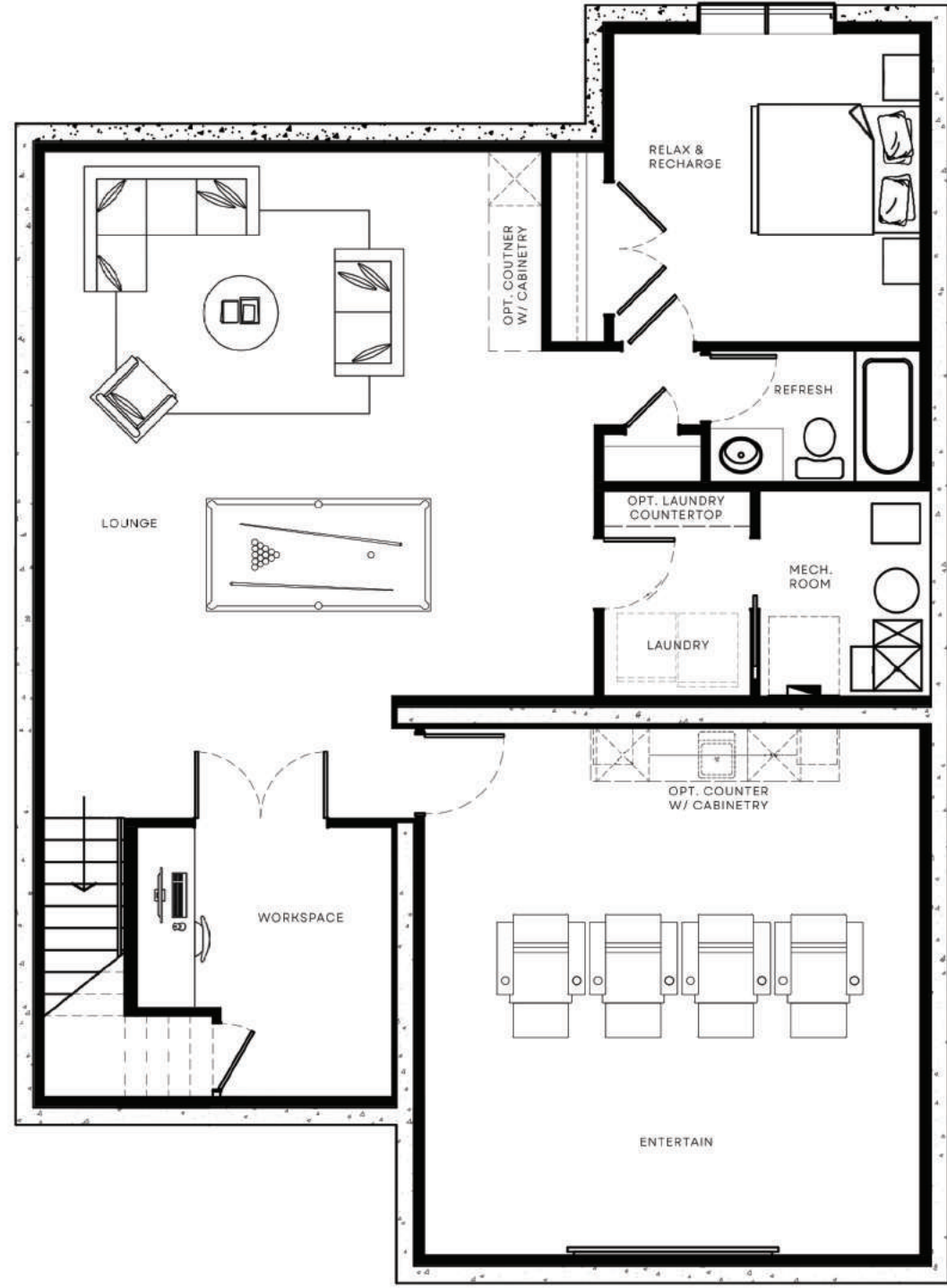
NORTH PRAIRIE
DEVELOPMENTS LTD.

THE BUILDER RESERVES THE RIGHT TO MAKE CHANGES AND MODIFICATIONS TO THE BUILDING. SPECIFICATIONS, FEATURES AND FLOOR PLANS TO COMPLY WITH MUNICIPAL REQUIREMENTS. THE ROOM DIMENSIONS AND SQUARE FOOTAGE ARE BASED ON ARCHITECTURAL DRAWINGS AND MEASUREMENTS. THE LOCATION OF UTILITIES MAY NOT BE ACCURATELY DEPICTED HEREIN. FURNITURE LAYOUTS ARE INTENDED FOR REFERENCE ONLY. ALL SIZES AND DIMENSIONS ARE APPROXIMATE AND ACTUAL AREA AND DIMENSIONS MAY VARY FROM THE PRELIMINARY PLANS TO THE FINAL SURVEY. ERRORS AND OMISSIONS EXCEPTED.

Champagne
BUNGALOWS

THE MOET II

OPTIONAL
BASEMENT
DEVELOPMENT
±1,417 SQ.FT
9' CEILINGS*



NORTH PRAIRIE
DEVELOPMENTS LTD.

THE BUILDER RESERVES THE RIGHT TO MAKE CHANGES AND MODIFICATIONS TO THE BUILDING. SPECIFICATIONS, FEATURES AND FLOOR PLANS TO COMPLY WITH MUNICIPAL REQUIREMENTS. THE ROOM DIMENSIONS AND SQUARE FOOTAGE ARE BASED ON ARCHITECTURAL DRAWINGS AND MEASUREMENTS. THE LOCATION OF UTILITIES MAY NOT BE ACCURATELY DEPICTED HEREIN. FURNITURE LAYOUTS ARE INTENDED FOR REFERENCE ONLY. ALL SIZES AND DIMENSIONS ARE APPROXIMATE AND ACTUAL AREA AND DIMENSIONS MAY VARY FROM THE PRELIMINARY PLANS TO THE FINAL SURVEY. ERRORS AND OMISSIONS EXCEPTED.

* THEATER ROOM CEILINGS 8'